

WATERGATE HOUSE

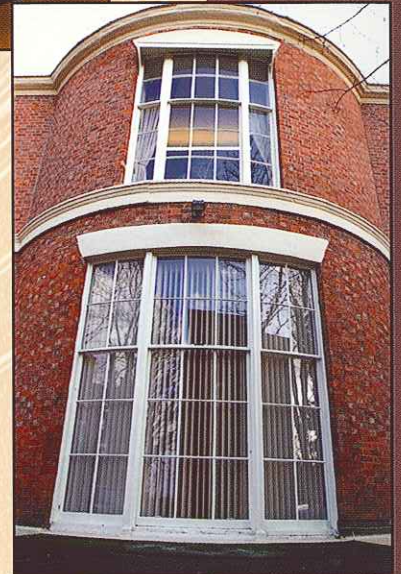
CHESTER

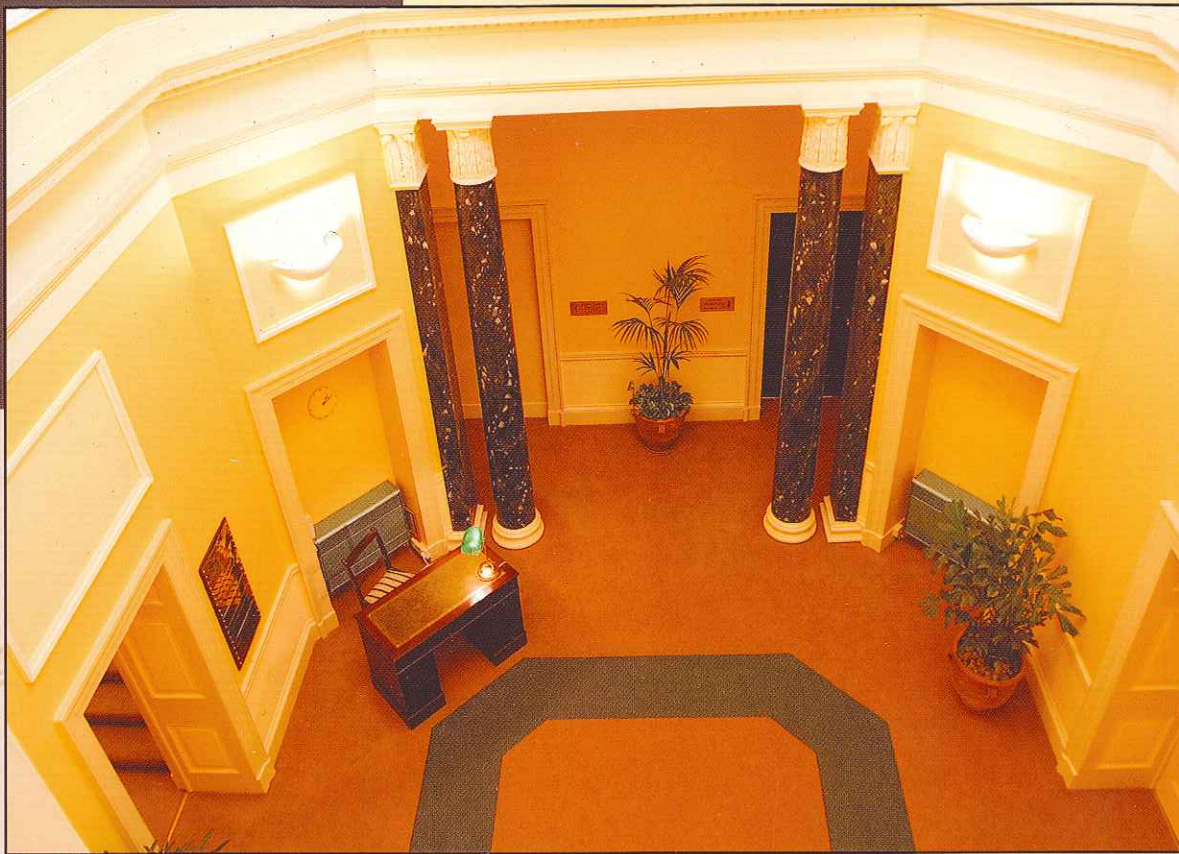
Superior office accommodation
in one of Chester's finest
listed buildings



Prestigious Offices

Watergate House provides some of the most prestigious office suites within Chester City Centre. Entered directly from Watergate Street one is immediately aware of the magnificence of the full renovation and refurbishment and in particular the atrium, which provides the main access to all the office suites. All the period features of this exclusive Grade II Listed Building have been carefully restored resulting in a superior and most impressive interior. Watergate House provides office accommodation to a standard which is unparalleled in Chester City Centre.





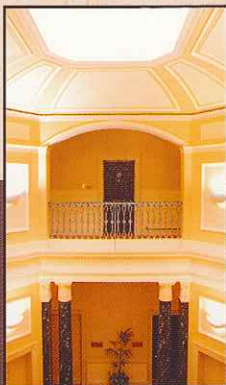
The Accommodation

Watergate House provides a variety of office suites all finished to provide the highest quality of office accommodation with fully fitted carpets, central heating, high quality decoration and Category II lighting. Many of the suites retain impressive original features such as high ceilings, mouldings and covings, original doors and large Georgian sash windows providing excellent levels of natural light. To the side and rear of the property there is ample private car parking.

Chester City Centre

Watergate House is located in an extremely prominent position on the corner of Nicholas Street Mews and Watergate Street in the heart of Chester City Centre. Access is excellent being on one of the main arterial routes into Chester City Centre and also being within one hundred yards of the inner ring road. All City Centre shops, bars, restaurants and other associated amenities are within very easy walking distance.

Chester is one of the UK's most important historic cities being the Roman Fortress of Deva founded in the 1st Century AD. The Walled City is not only a major tourist destination but also a very prosperous and sought after centre for business.





Watergate House



Terms

Offices are available to let on an internal repairing basis for a term to be agreed.

Availability

Please refer to the attached Schedule of Availability.

For further information and viewings please contact the sole retained agents:

Contact: Jonty Goodchild

WATERGATE HOUSE
LOWER WATERGATE STREET
CHESTER CITY CENTRE

SCHEDULE OF AVAILABLE OFFICES SUITES

FLOOR	SUITE	SIZE SQ FT	SIZE SQ M	RENT (per annum exclusive)	CAR SPACES
Half Landing	Rooms 1 - 4	968	90	£13,552	2
First Floor	Room 9	496	46	£6,944	1
Half Landing	Room 1 (in isolation)	319	30	£4,466	1
Ground Floor	Room 2	312	29	£4,368	1

Please note that car parking spaces are available by separate agreement and are not included in the rents quoted above. Subject to Contract

For further information or to arrange a viewing, please contact:

Jonty Goodchild @ Bolton Birch –

01244 311 681

07968 160277

